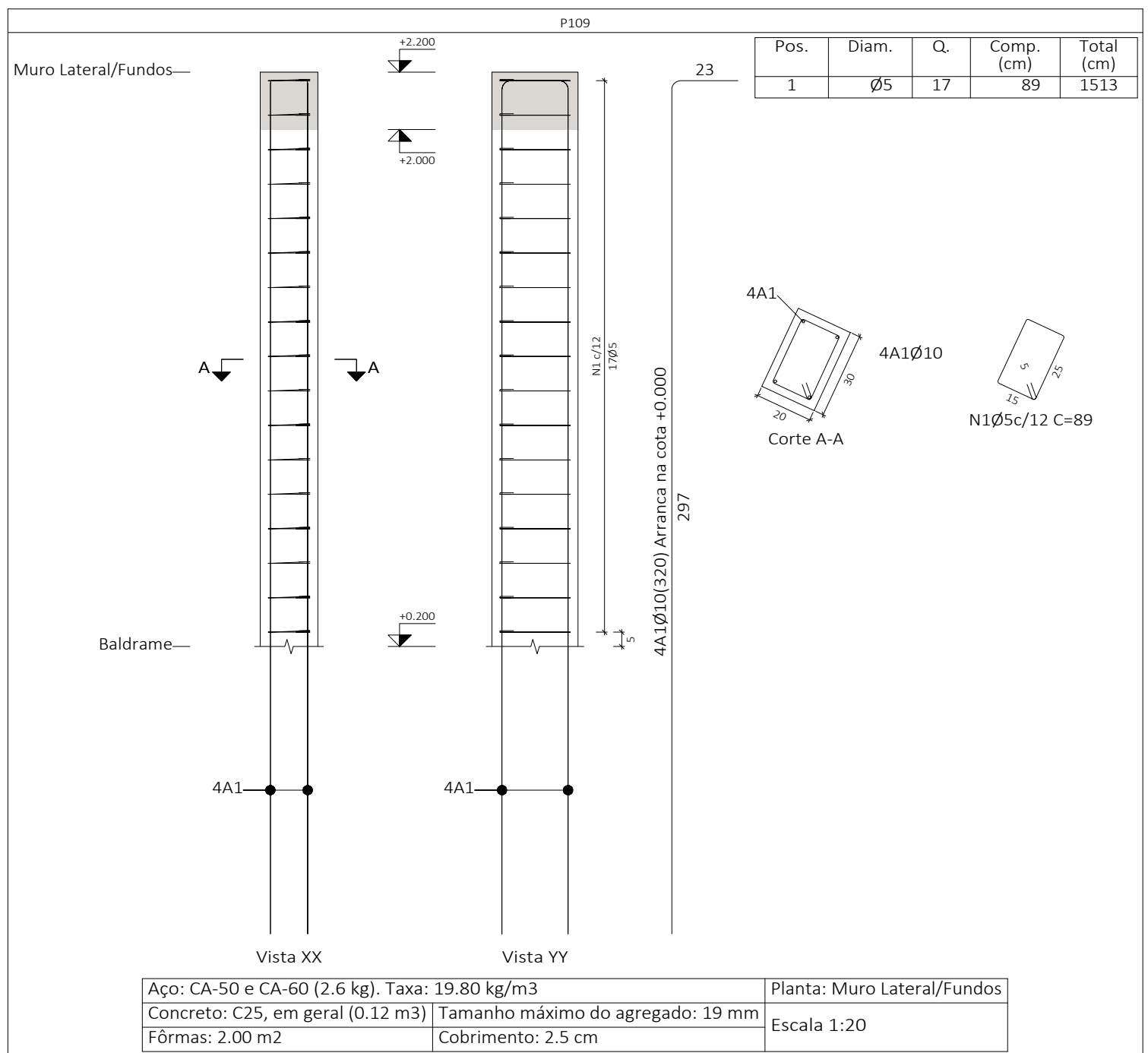
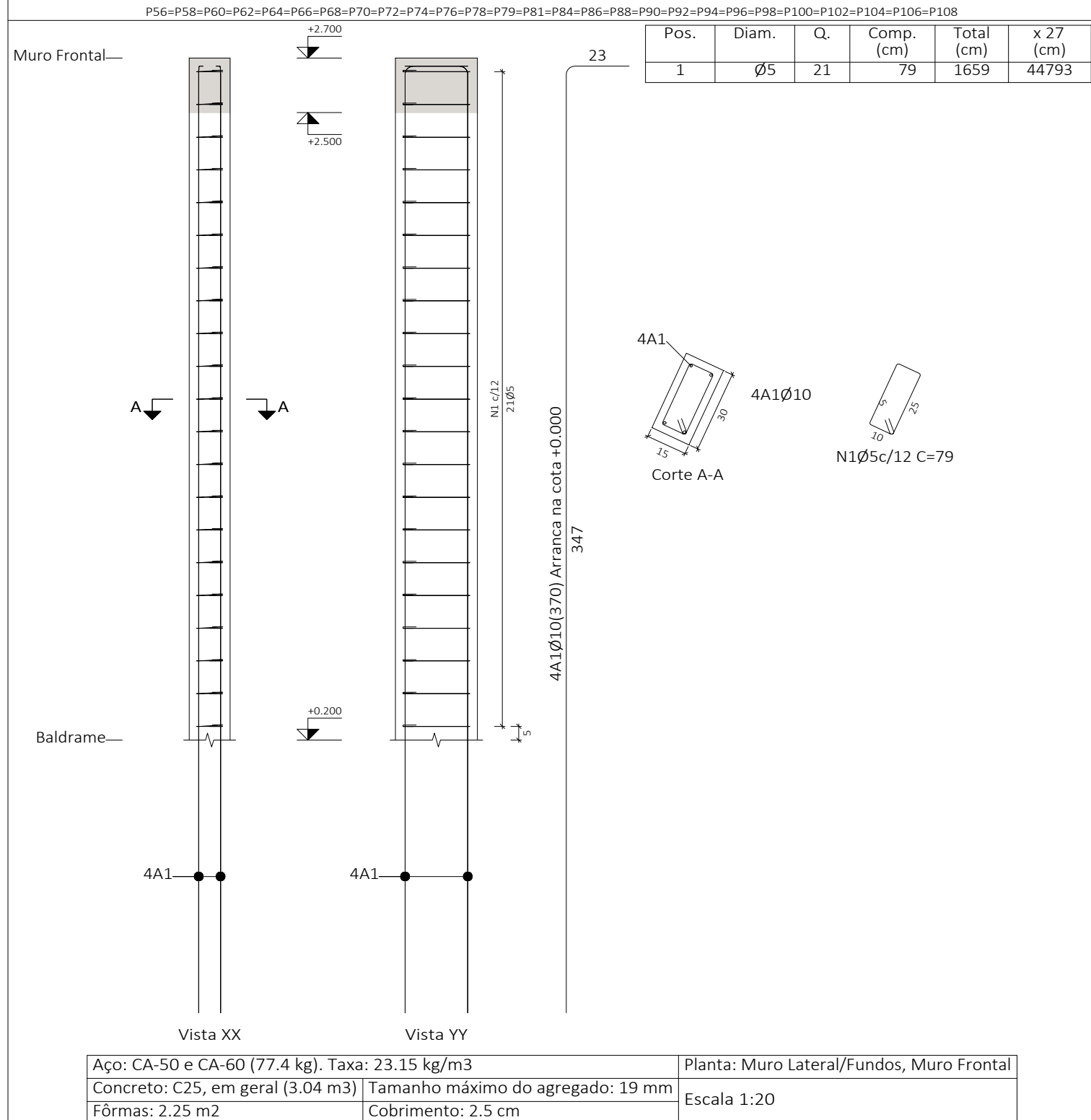
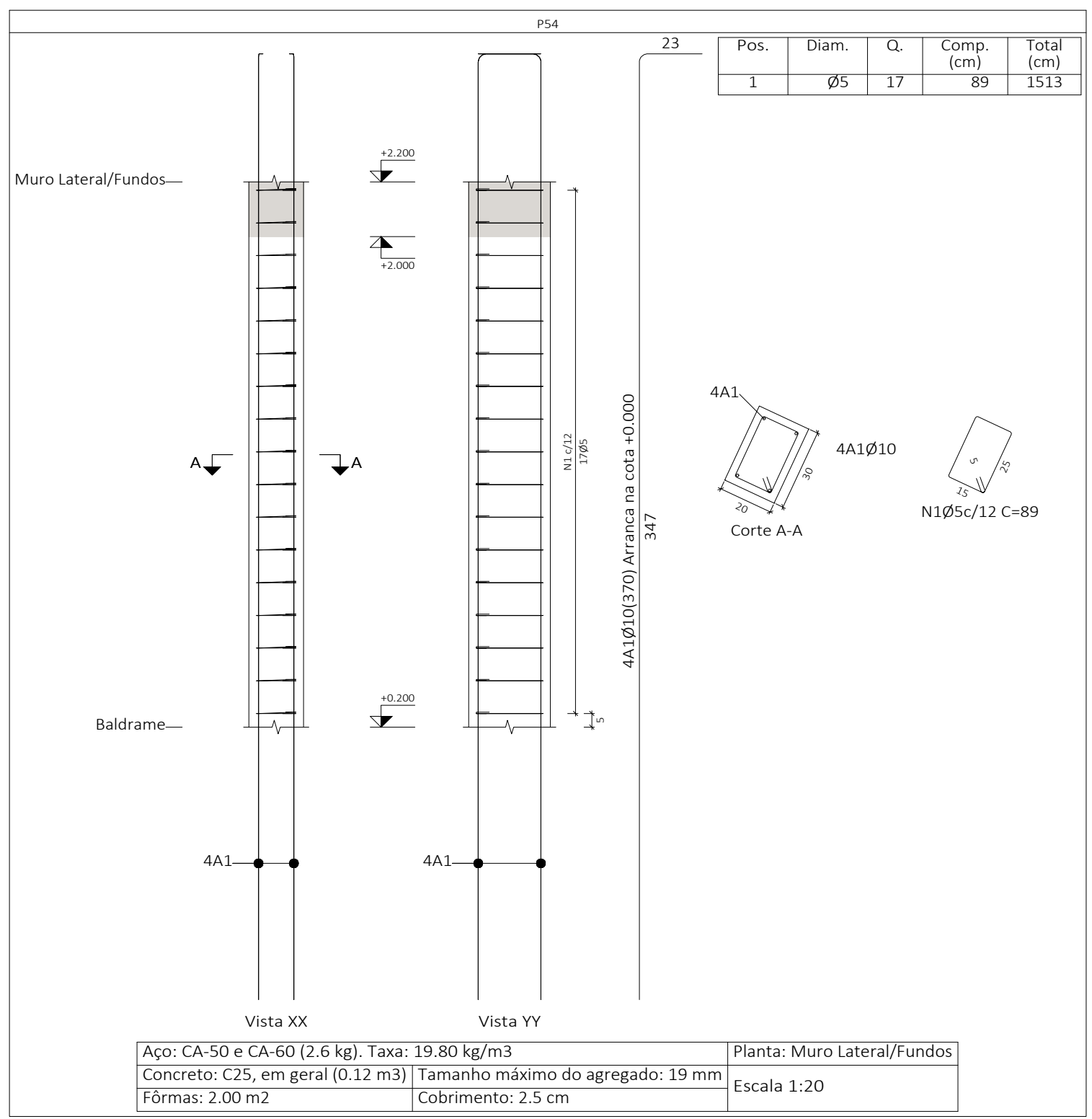
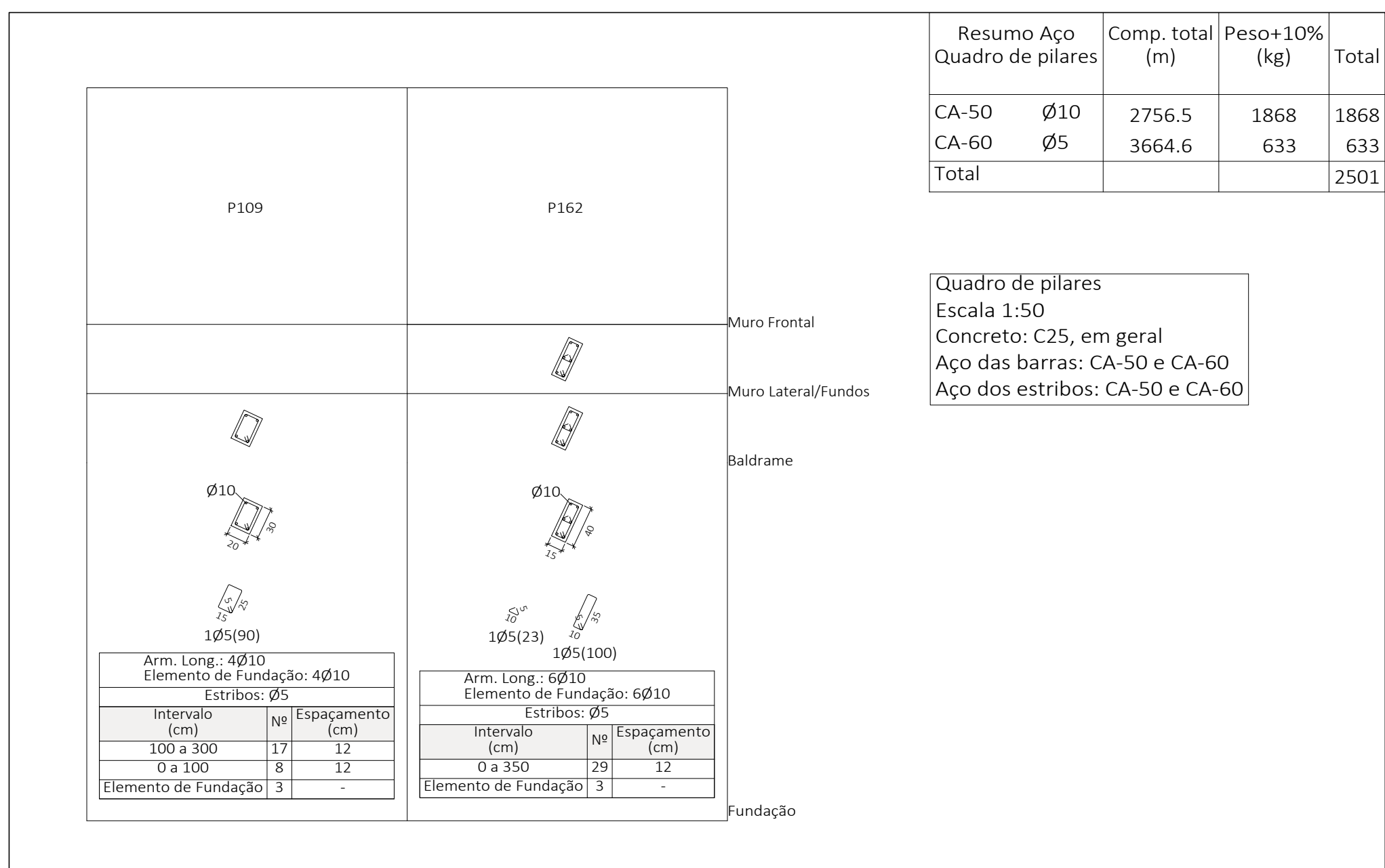
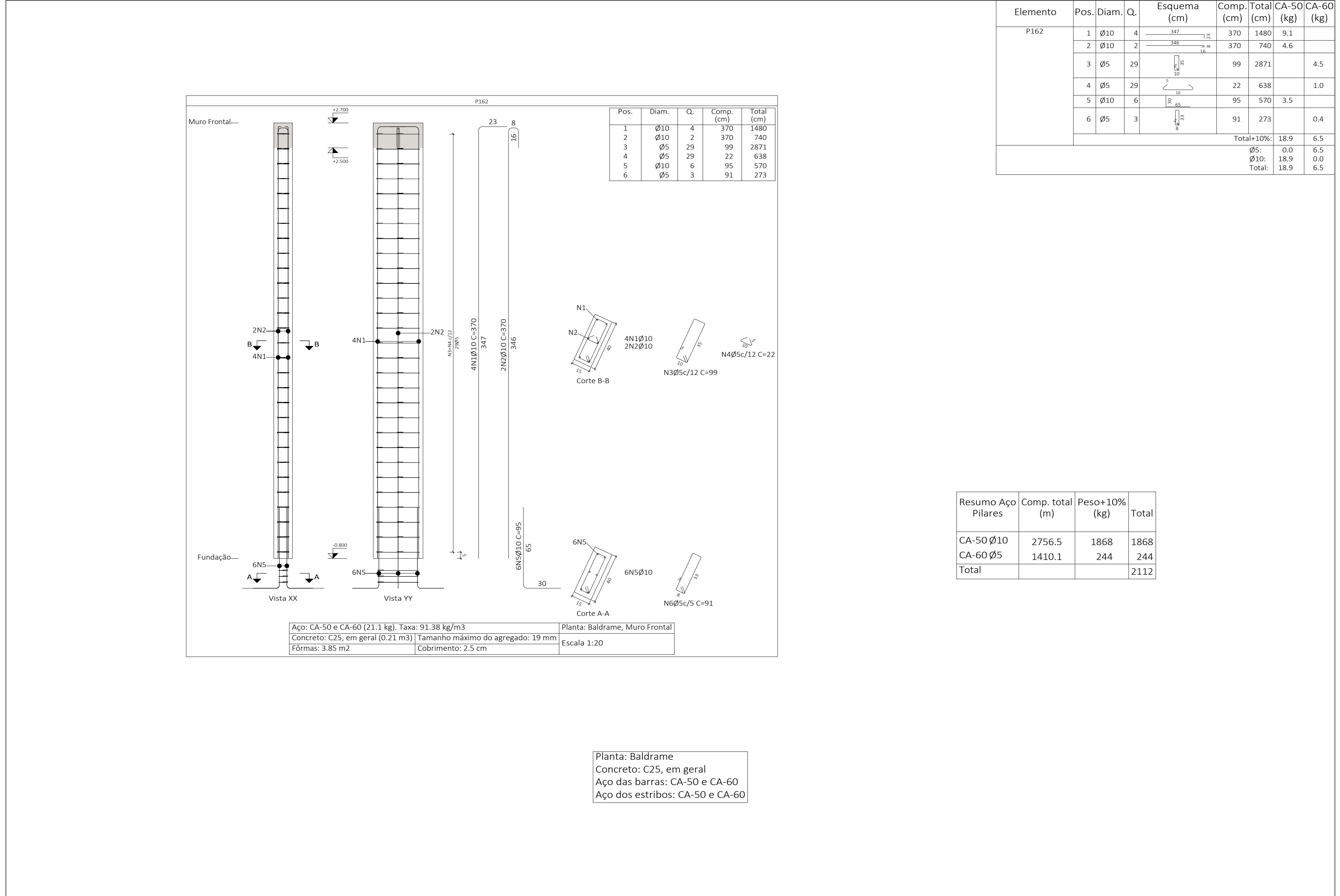
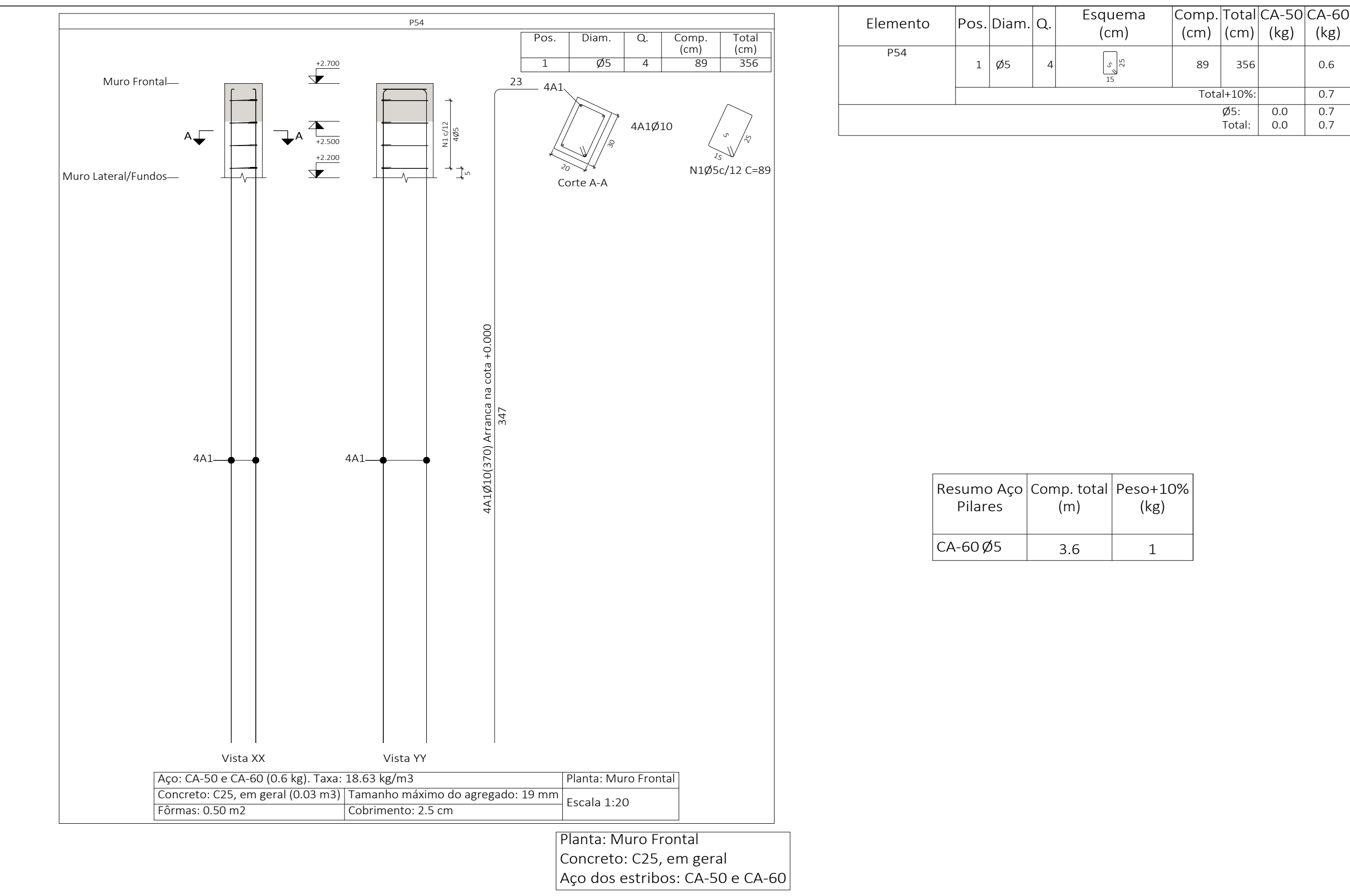


| Elemento | Pos. | Diam. | Q. | Esquema (cm) | Comp. (cm)   | Total CA-50/CA-60 (cm) | Total CA-50/CA-60 (kg) |
|----------|------|-------|----|--------------|--------------|------------------------|------------------------|
| P109     | 1    | Ø5    | 17 | 13           | 79           | 1343                   | 2.1                    |
|          |      |       |    |              | Totais: 100% | 828                    | 2.3                    |
|          |      |       |    |              | Ø5           | 0.0                    | 64.4                   |
|          |      |       |    |              | Total:       | 0.0                    | 64.4                   |



| Resumo Aço | Comp. total (m) | Peso+10% (kg) |
|------------|-----------------|---------------|
| CA-60 Ø5   | 2251.0          | 389           |



| Resumo Aço | Comp. total (m) | Peso+10% (kg) |
|------------|-----------------|---------------|
| CA-60 Ø5   | 3.6             | 1             |

PROPRIETÁRIO: PREFEITURA MUNICIPAL DE APODI

ENDEREÇO DO EMPREENDIMENTO: APODI - RN

MUNICÍPIO - UF: APODI - RN

PROPRIETÁRIO: *Handwritten signature*

RESP. TÉCNICO: CREA 2145/4070RN

AUTOR DO PROJETO: CAU

OBSERVAÇÕES: CEMITÉRIO PÚBLICO MUNICIPAL JARDIM DA PAZ (1ª Etapa)

PROJETO ESTRUTURAL

DESCRIÇÃO: PILARES MUROS LATERAIS E FUNDOS

PIELES MURO FRONTAL

QUADRO DE PILARES

FRANCA: 02

07

GERÊNCIA DE PLANEJAMENTO PMA